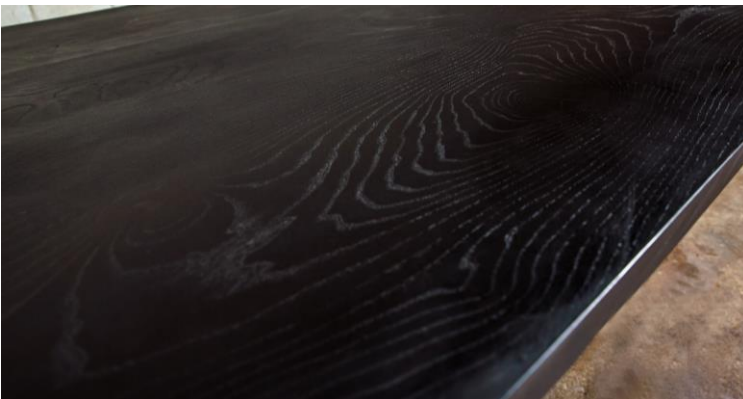


RECTANGULAR STAIN ASH DINING TABLE ON COMPOSITE CONCRETE LEGS



Industrial meets wood! Ash wood top and concrete legs made from a composite material so it's making each base a fraction of the normal weight of concrete,

- 72" table seats up to 6
- 84" table seats up to 8
- 96" table seats up to 10
- 108" table seats up to 10
- 120" table seats up to 12

Overall Dimensions

72" Table overall:

72"L x 38"W x 30"H

Top Thickness: 1 $\frac{3}{4}$ "

Overhang at ends: 8"

Supports: 24" x 28" x 5"

Space between supports: 46"

Weight: 250LBS

84" Table overall:

84"L x 38"W x 30"H

Top thickness: 1 $\frac{3}{4}$ "

Overhang at ends: 8"

Supports: 24" x 28" x 5"

Space between Supports: 58"

Weight: 275LBS

96" Table Overall:

96"L x 38"W x 30"H

Top thickness: 1 $\frac{3}{4}$ "

Overhang at ends: 12"

Supports: 24" x 28" x 5"

Space between Supports: 62"

Weight: 300LBS